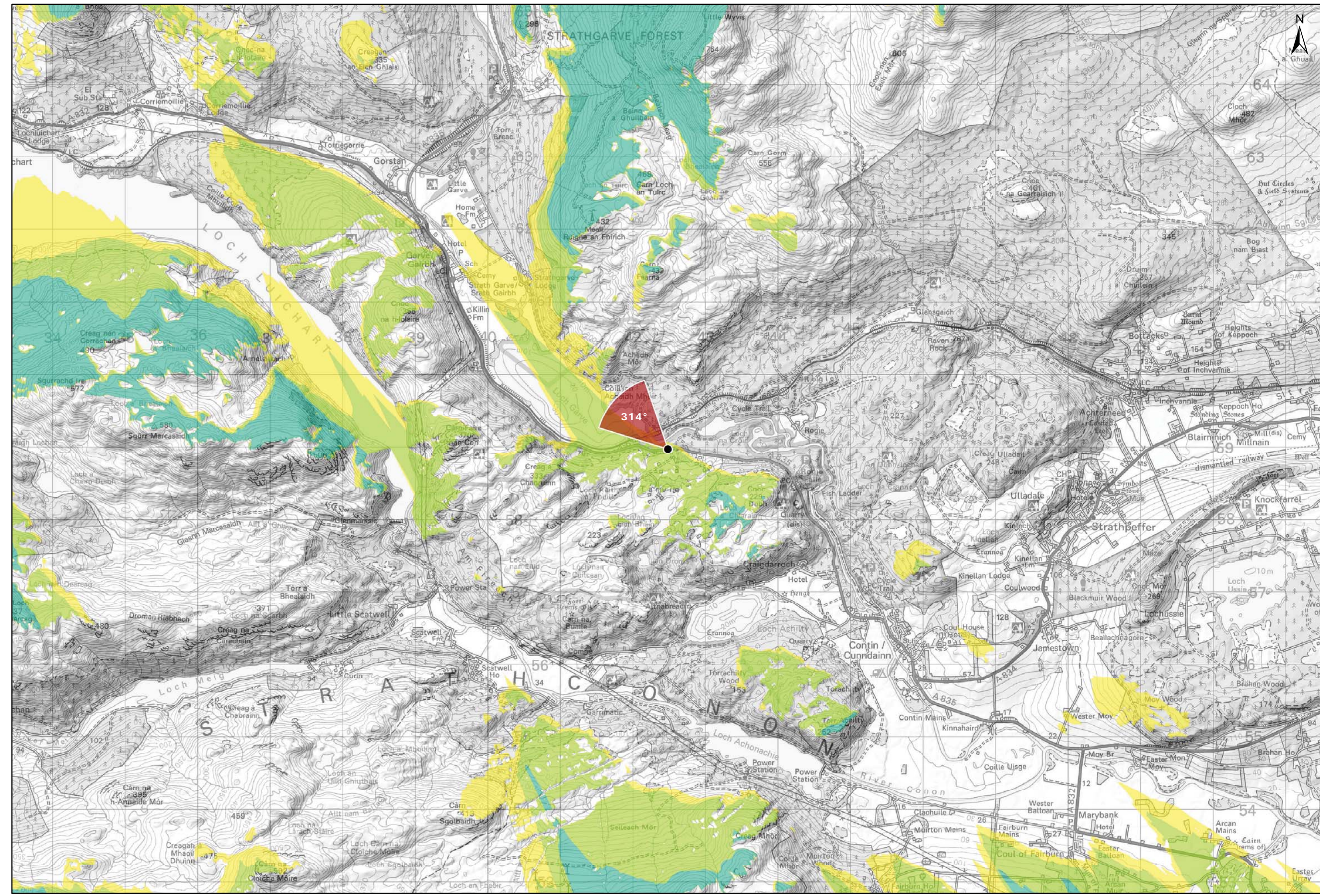


Viewpoint Location Plan Baseline Panorama  
Scale: 1:150,000



Viewpoint Location Plan  
Scale: 1:50,000 (Blade Tip ZTV)

**Note:**  
1. ZTV: Created using ESRI ArcGIS 10.5 software using the following data and parameters:  
Blade tip height: 133m  
DTM Data: OS Terrain 5 DTM. Resampled to a 10m grid.  
Observer height: 2m  
No surface features, such as buildings or trees, were included in the analysis.  
Earth curvature and light refraction has been included in calculations.

**Legend:**

- Proposed Turbines
- Viewpoint Location
- 90° Field of View Viewpoint
- 53.5° Field of View Viewpoint
- Cumulative Wind Turbines

**Wind Farm Status (01/10/2018)**

- Wind Farm Status (01/10/2018)
- Wind Farm Status (01/10/2018)
- Consented
- Operational; Under Construction

**Zone of Theoretical Visibility**

No. of Turbines (133m) Visible

- 1 - 3
- 4 - 6
- 7 - 9

Blade Tip:	133m
DTM:	OS T5
DTM resolution:	5m
Observer height:	2m
Surface features:	Excluded
Earth curvature:	Included

**Title:** Figure 9.23a  
Viewpoint 3: A835 Garve Bridge

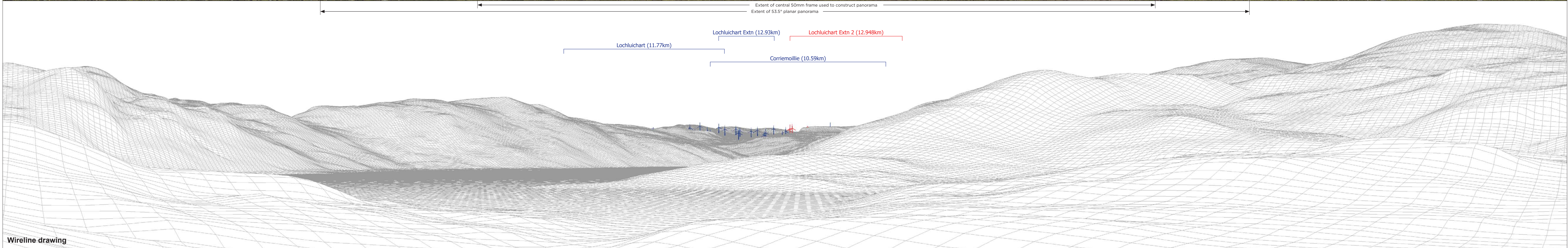
**Lochluichart Wind Farm Extension II**

**Source:** © Crown copyright and database rights (2016)  
OS (license No 0100031673)

**Client:** Infinergy

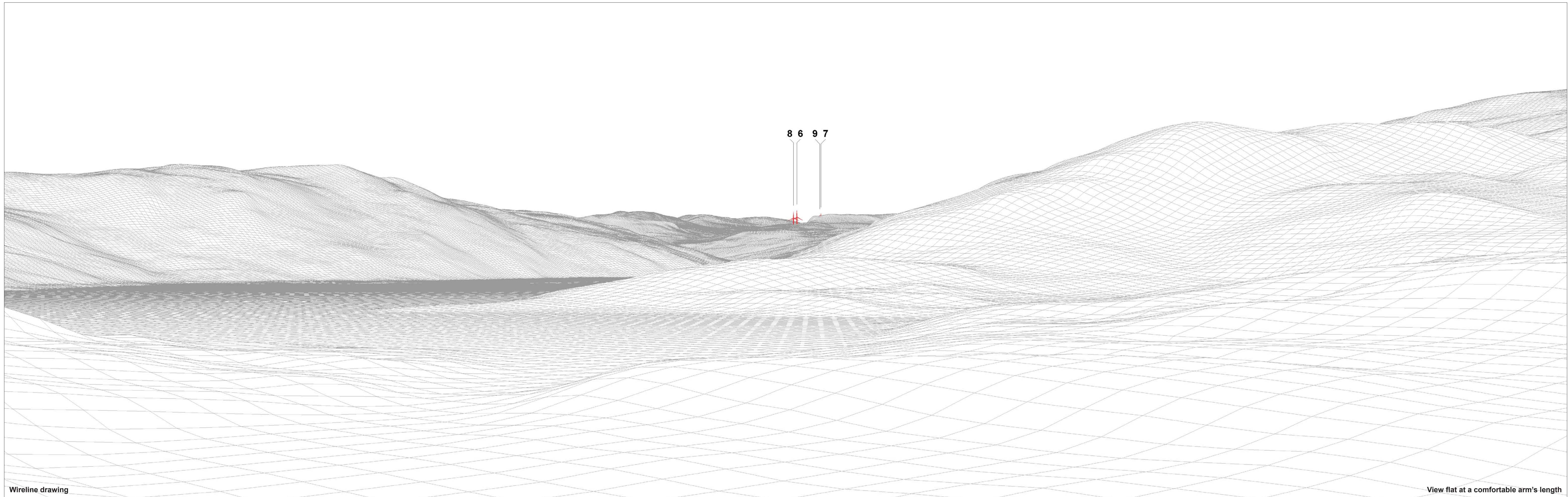
<b>Drawn by:</b> MJF	<b>Checked:</b> JW
<b>Date:</b> 15/10/2018	<b>Figure:</b> 9.23a
<b>Scale:</b>	<b>Revision No:</b> B

**INFINERGY**



<b>OS reference:</b> 242481 E 858984 N	<b>Horizontal field of view:</b> 90° (cylindrical projection)	<b>Camera:</b> Canon EOS 5D Mark II
<b>Eye level:</b> 91.37 m AOD	<b>Principal distance:</b> 522 mm	<b>Lens:</b> 50mm (Canon EF 50mm f/1.4)
<b>Direction of view:</b> 314°		<b>Camera height:</b> 1.5 m AGL
<b>Nearest turbine:</b> 12.940 km		<b>Date and time:</b> 16/05/18, 13:38

**Figure: 9.23b**  
**Viewpoint 3: A835, Garve Bidge**



Wireline drawing

View flat at a comfortable arm's length

OS reference: 242481 E 858984 N  
Eye level: 91.37 m AOD  
Direction of view: 314°  
Nearest turbine: 12.940 km

Horizontal field of view: 53.5° (planar projection)  
Principal distance: 812.5 mm  
Paper size: 841 x 297 mm (half A1)  
Correct printed image size: 820 x 260 mm

Camera: Canon EOS 5D Mark II  
Lens: 50mm (Canon EF 50mm f/1.4)  
Camera height: 1.5 m AGL  
Date and time: 16/05/18, 13:38

Figure: 9.23c  
Viewpoint 3: A835, Garve Bidge



Photomontage (operational turbines have been montaged in this view)

View flat at a comfortable arm's length

<b>OS reference:</b> 242481 E 858984 N	<b>Horizontal field of view:</b> 53.5° (planar projection)	<b>Camera:</b> Canon EOS 5D Mark II
<b>Eye level:</b> 91.37 m AOD	<b>Principal distance:</b> 812.5 mm	<b>Lens:</b> 50mm (Canon EF 50mm f/1.4)
<b>Direction of view:</b> 314°	<b>Paper size:</b> 841 x 297 mm (half A1)	<b>Camera height:</b> 1.5 m AGL
<b>Nearest turbine:</b> 12.940 km	<b>Correct printed image size:</b> 820 x 260 mm	<b>Date and time:</b> 16/05/18, 13:38

**Figure: 9.23d**  
**Viewpoint 3: A835, Garve Bidge**